

Zertifikat nach SL3 für Gestelle für Atomkraftwerke in Schweden Certificate according SL3 for Stands for nuclear powerplant in Sweden



REPORT

issued by an Accredited Testing Laboratory

Contact person

Gunnar Kjell

SP Structural and Solid Mechanics

+46 10 516 52 23

gunnar.kjell@sp.se



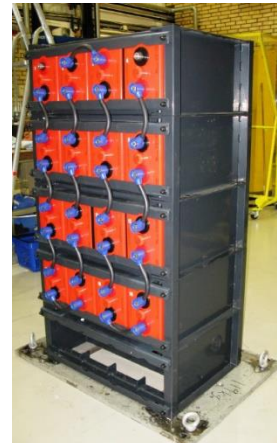
Date

Mar. 26, 15

Reference

5P00398A

1002
ISO/IEC 17025



2 Assignment

A seismic simulation test according to directives given in the document KBE EP-147, a document issued by representatives from the Swedish nuclear power plants. The test method is in accordance with IEEE 344-2004 *Recommended Practice for Seismic Qualification of Class 1E Equipment for Nuclear Power Generating Stations*.

3 Summary

The test objects were subjected to multifrequency biaxial excitation. Test runs with the rack mounted in two different orientations were performed, so excitations in both horizontal directions were obtained.

As Required Response Spectra, RRSa, the SL2 and SL3 spectra defined in KBE-EP-147 were used. These spectra are intended to be general floor response spectra for Swedish nuclear power plants.

During the seismic test runs secondary response spectra were measured at the rack. These spectra were then used at a test of battery cells filled with electrolyte (SP report 5P00398B).

The rack passed all test runs without suffering mechanical damage.